

Access Point AP-500AC Setup Guide

Thank you for purchasing the Access Point AP-500AC. AP-500AC is a wireless Access Point that supports IEEE 802.11a/b/g/n/ac and 2.4GHz/5.0GHz concurrent wireless connectivity. It can be used as a base station that connects wireless client devices. In addition to advanced wireless connectivity, enterprise-level wireless security and power supply via PoE (Power over Ethernet) are supported. This Setup Guide explains how to configure and use AP-500AC in a wireless network.



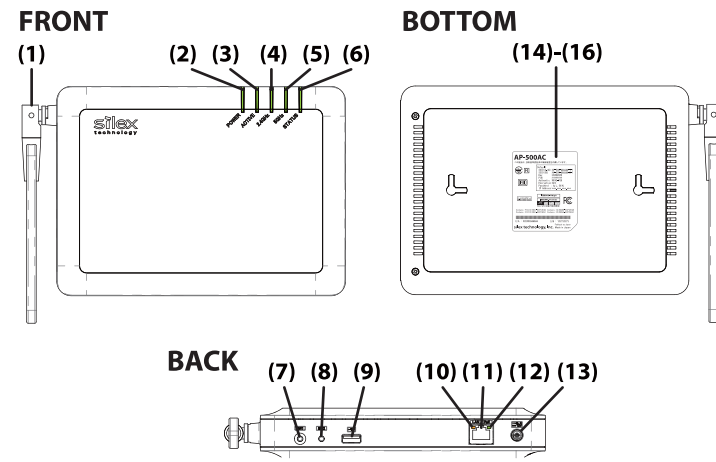
WA102900XC

Package Contents

Following items are bundled with AP-500AC.

- AP-500AC
- AC adaptor
- Warranty booklet
- Setup Guide (this document)
- GPL license notice

Parts and Function



| | |
|--|--|
| (1) Wireless LAN Antenna | Wireless antenna for wireless communication |
| (2) Power LED | ON(Green): Powered on BLINK(Red): USB storage error BLINK Rapidly(Red): USB over current |
| (3) ACTIVE LED | ON(Green): Ready BLINK(Green): Powering on BLINK(Orange): Running in Configuration Mode BLINK(Red): Configuration Mode error |
| (4) 2.4GHz LED | ON(Green): One or more 2.4GHz wireless interfaces are active OFF: 2.4GHz wireless interface is not active |
| (5) 5GHz LED | ON(Green): One or more 5GHz wireless interfaces are active OFF: 5GHz wireless interface is not active |
| (6) STATUS LED | ON(Red): DFS is running (Communication is disabled then) BLINK(Green): Smart Wireless Setup is in progress ON(Green): Smart Wireless Setup is completed (* Turns off in 3 mins) ON(Red): Smart Wireless Setup failed (* Turns off in 3 mins) |
| (7) Push Switch (SW1) | When pressed together with the one on your wireless device while AP-500AC is active, wireless configuration can be performed. (Smart Wireless Setup) |
| (8) Push Switch (SW2) | Start in Configuration Mode: Press and hold this switch for 3 sec or more while AP-500AC is active. Factory default configuration: Press and hold this switch while turning on AP-500AC. Release the switch in 2 sec or more after Link LED and Status LED turn on. |
| (9) USB Port | Connect a USB cable (A-type connector). |
| (10) Status LED(Yellow) | Blinks while communicating in a wired LAN. |
| (11) Network Port | Connect a network cable. |
| (12) Link LED (Green) | Turns on when connected to a wired LAN. |
| (13) AC Connector | Connect an AC adaptor. |
| (14) Label (containing default values) | |
| SSID (2.4GHz/5GHz) | SSID of 2.4GHz/5GHz (default value) |
| Key | Network key (default value) |
| PIN Code | PIN code (default value) |
| Authentic | Authentication mode (default value) |
| Encryption | Encryption mode (default value) |
| Password | Login password (default value) |
| IP Address | IP Address (default value) |
| (15) E/A | Ethernet Address |
| (16) S/N | Serial Number |

Configuration Method

AP-500AC can be configured from the embedded Web configuration interface. It can be accessed by following methods:

- (1) Using wired network connection (See Step1)
- (2) Using Configuration Mode (See Step1)
- (3) Using wireless network connection (See User's Manual)
- (4) Using Smart Wireless Setup (See User's Manual)

Necessary Items

Following items are required.

- Network Cable
- PC to use for configuration
- Notes on Use of Antenna (Download from our homepage)
- User's Manual (Download from our homepage)

Downloading User's Manual

User's Manual and Notes on Use of Antenna can be downloaded from our homepage. Access the below URL to download.

<https://www.silextechnology.com/>

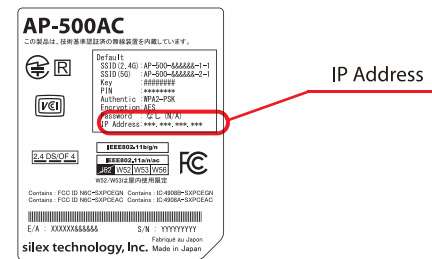
After accessing above URL, go to the support page and download the necessary documents.

Step1 Accessing Web Configuration Interface

Using Wired Network Connection

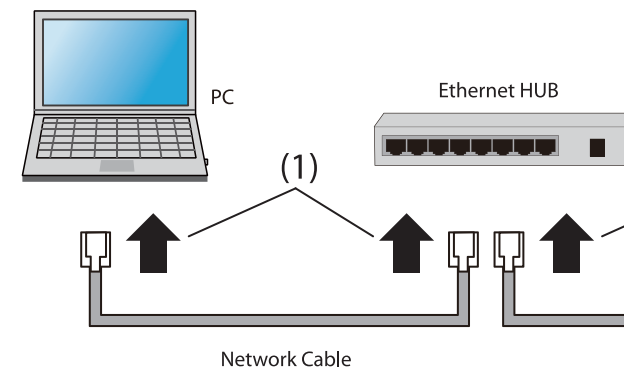
Configure AP-500AC by connecting it to a wired network. It is OK to connect two or more AP-500AC units to configure.

- 1** Check the IP Address of AP-500AC. The default IP Address can be found on the bottom label of AP-500AC.



* If AP-500AC was configured for another network in the past and you are not sure what IP Address has been assigned, reset AP-500AC to factory defaults. For details, refer to **Factory Default Configuration** in the back.

- 2** Connect the PC (to use for configuration) and Ethernet Hub using a network cable. (1)



- 3** Connect AP-500AC and Ethernet Hub using a network cable (2).

- 4** Connect the AC adaptor to AP-500AC (3) and the AC adaptor's plug to an electrical outlet (4).

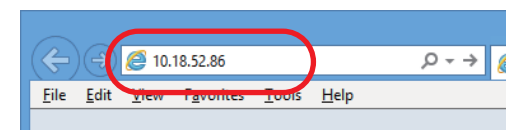
* When receiving power over Ethernet (PoE), the AC adaptor does not need to be connected. Make sure that the PoE supported HUB or PoE power supply unit is used then.
* To connect two or more AC-500AP units, repeat the process at **1 - 4**.

- 5** Change the network settings of the PC to allow accessing AP-500AC.

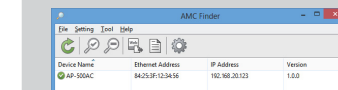
Example:
In case the IP Address of AP-500AC is 10.18.52.86, change the network settings of your PC to the following:
- IP Address : 10.1.2.3
- Subnet Mask : 255.0.0.0

* Please be sure to set a unique address to your PC, that is not used by AP-500AC.
By default, AX-500AP has an IP Address of "10.xxx.xxx.xxx".

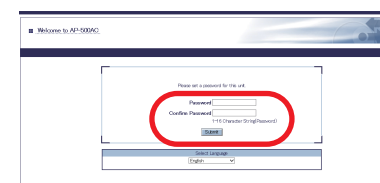
- 6** Start a Web browser (Internet Explorer, Google Chrome, etc.) on the PC, enter the IP address of AP-500AC in the address bar and press the **ENTER** key.



* By using the device search utility "AMC Finder" that can be downloaded from our homepage, it is possible to show all AP-500AC units as a list and access the login password configuration of each. For how to install and use AMC Finder, refer to the User's Manual.

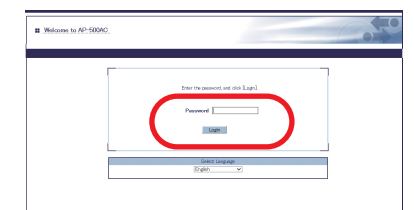


- 7** The Web browser will run and the login password configuration page will be displayed. Enter the password to configure for AP-500AC and click **Submit**.



* The login password configuration page is displayed only when AP-500AC is configured for the first time.

- 8** The login menu window is displayed. Enter the login password you have configured and click **Login**.



Using Configuration Mode

* Configure AP-500AC by directly connecting it to the PC.

- 9** The Web page of AP-500AC is displayed.

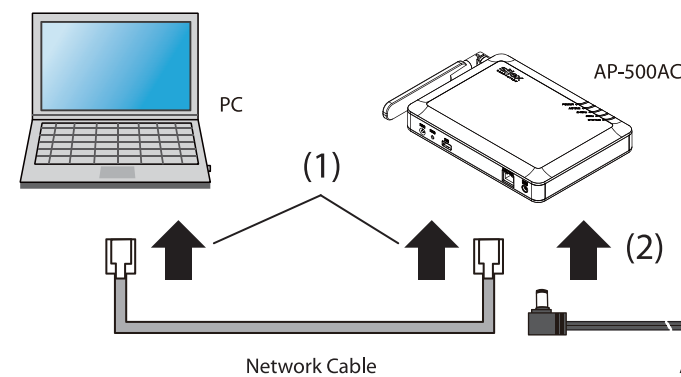


Go on to Step2 on back

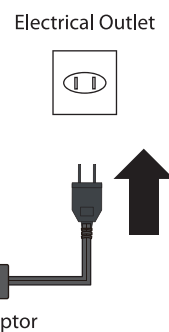
- 1** If a wireless interface is enabled on the PC (to use for configuration), please disable it temporarily.

* If a wireless interface is enabled on the PC, the Web configuration interface may not be displayed.

- 2** Connect AP-500AC and the PC using a network cable (1).



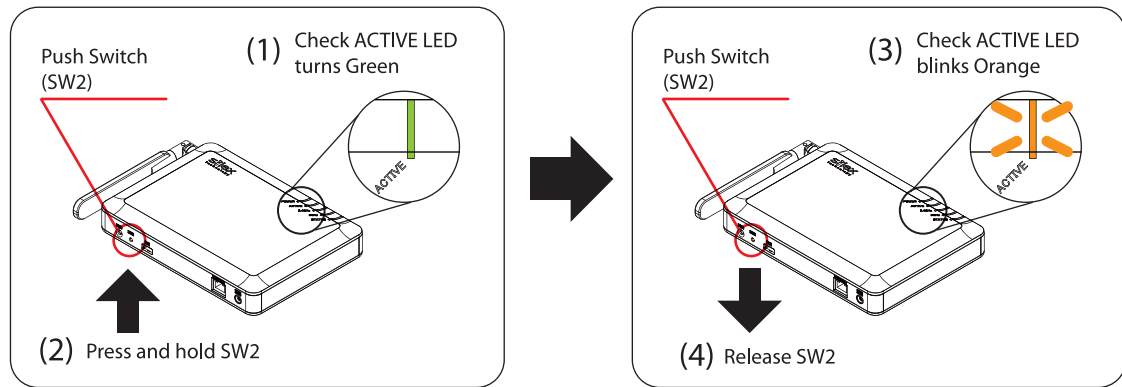
- 3** Connect the AC adaptor to AP-500AC (2), and the AC adaptor's plug to an electrical outlet (3).



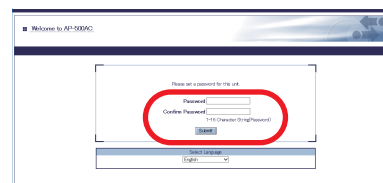
Go on to Step4 on back

Using Configuration Mode

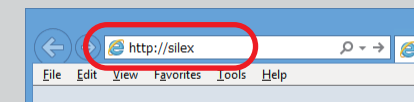
- 4** When ACTIVE LED blinks and then turns Green, press and hold the push switch (SW2) with a fine tipped object such as a pen or pencil. Release the push switch when ACTIVE LED blinks Orange (it may take 3 sec until blinking Orange). AP-500AC will start running in the Configuration Mode and you will be ready to configure AP-500AC from the PC.



- 7** Start a Web browser (Internet Explorer, Firefox, etc) on the PC you are using for the setup. When the login password configuration page appears, enter the password to configure for AP-500AC and click **Submit**.



- * The login password configuration page is displayed only when AP-500AC is configured for the first time.
- * If the Web configuration interface is not displayed, enter "http://sillex" in the address bar of the Web browser and press the **Enter** key.



- 8** The login menu window is displayed. Enter the login password you have configured and click **Login**.

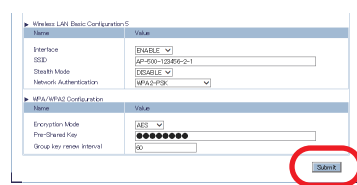


- 9** The Web page of AP-500AC is displayed.

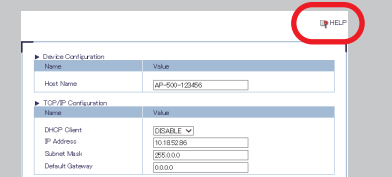


Step2 Configuration

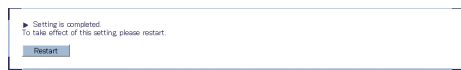
- 1** In the Web configuration interface, configure the necessary settings and click **Submit** at bottom right of the page.



* For details on each setting, refer to the User's Manual or the Help page. Clicking **Help** on top right of the page will open the Help page.



- 2** When the configuration is finished, the **Restart** button is displayed. To continue configuration, click the menu or tab you want to configure next. When necessary configuration is done, click the **Restart** button.

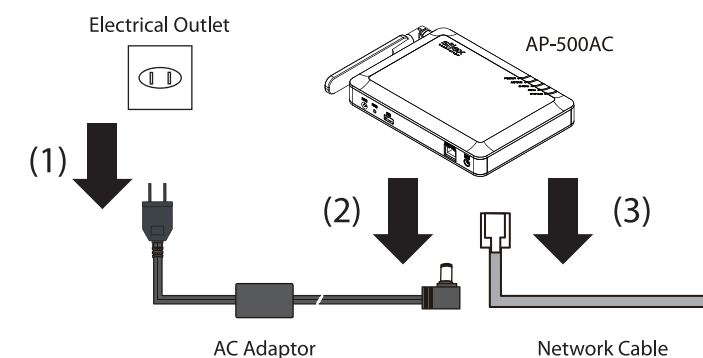


- 3** After the **Restart** button is clicked, the progress bar is displayed. When the progress bar reaches the right end, the restart is completed.



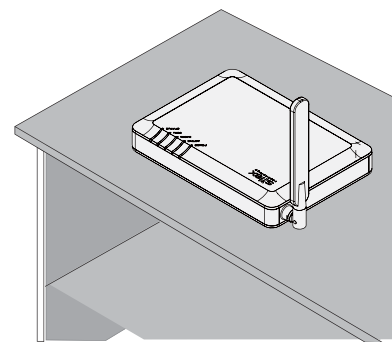
- 4** Unplug the AC plug from the outlet (1) and then AC adaptor from AP-500AC (2).

- 5** Unplug the network cable from AP-500AC (3).

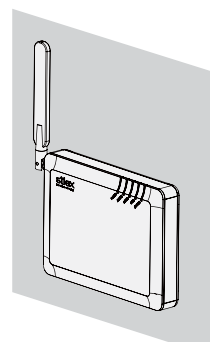


Step3 Installation

- 1** Install AP-500AC to a location of use and adjust the direction of antenna. For details, refer to "Notes on Use of Antenna".



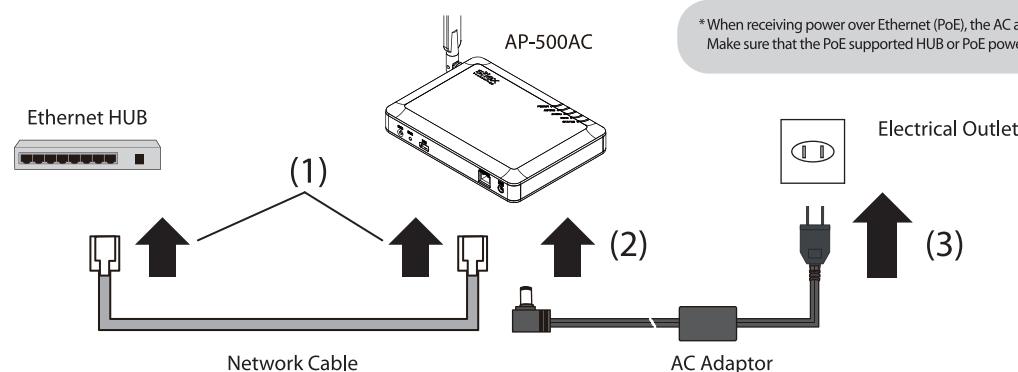
When placing the unit on a table



When hanging the unit on a wall

- 2** Connect AP-500AC and Ethernet Hub using a network cable. (1)

- 3** Connect the AC adaptor to AP-500AC (2) and AC plug to an electrical outlet (3).



* When receiving power over Ethernet (PoE), the AC adaptor does not need to be connected. Make sure that the PoE supported HUB or PoE power supply unit is used then.

Factory Default Configuration

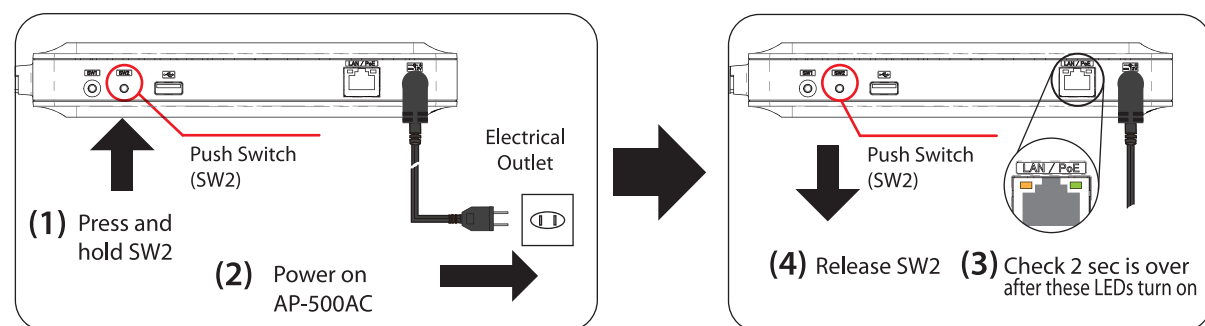
Follow the instructions below to reset AP-500AC to the factory default setting.

- 1** Unplug the AC plug of AP-500AC from the electrical outlet.

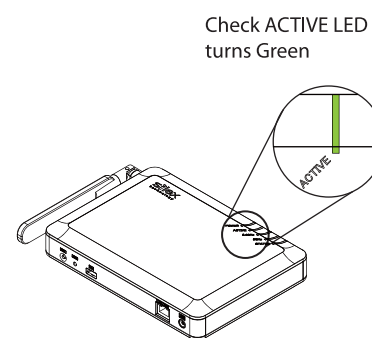
* When receiving power over Ethernet (PoE), unplug the network cable.

- 2** Press and hold the push switch (SW2) on AP-500AC while re-inserting the AC plug into the outlet. Release the push switch in 2 sec or more after the Link LED and Status LED turned on.

* When receiving power over Ethernet, press and hold the push switch (SW2) on AP-500AC while re-inserting the network cable.



- 3** When the factory default configuration is completed, AP-500AC will automatically be restarted. Check that the ACTIVE LED turns Green on AP-500AC.



Trademarks

Company names and product names contained in this document are trademarks or registered trademarks of their respective companies.

Customer Support Center

Sillex Technology will support you by e-mail and phone to solve your problems.

Customer Support Center information

| | Phone | E-mail |
|--------|------------------|---------------------------|
| USA | +1-657-218-5199 | support@sillexamerica.com |
| Europe | +49-2154-88967-0 | support@sillexeurope.com |