

# 4K Digital Signage Player ST-700



## 4K model supporting -10°C operating temperature

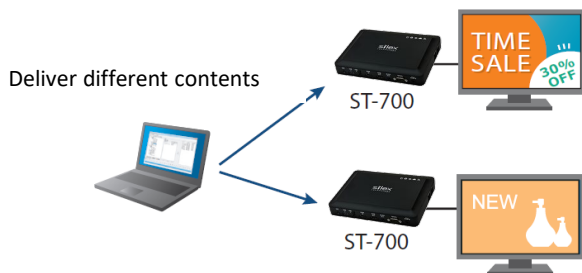
### Overview

The ST-700 is a 4K digital signage player with commercial-grade Wi-Fi connectivity. It features split-screen content playback, scrolling text, multi-display digital signage, wirelessly synchronized playback across displays, integrated web browser for HTML5 contents, interactivity with a touch panel, and contents mapping with an HID device. Free SX Sign Control Software provides you with a user-friendly UI to enable these features for your digital signage contents.

### Features

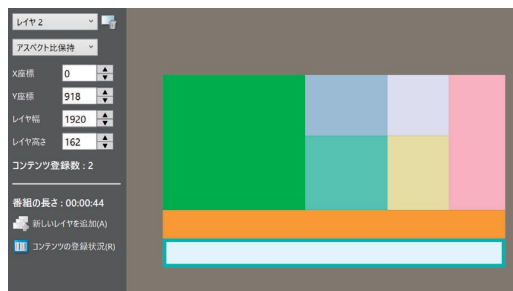
#### 1 Local Playback (Store & Play)

The ST-700 plays back contents stored in its embedded 20GB storage as scheduled. Silex's free SX Sign Control Software distributes the contents and schedule to each ST-700 installed in your network.



#### 2 Split Screen Contents

The ST-700 supports up to 8 layers to mix different contents such as a video, images, HTML5 contents, and scrolling text to display on a single screen.



- ※4K output is out of scope to playback split-screen content.
- ※Minimum web page program duration is 2 minutes for split-screen content. You can assign up to two web contents longer than 2 minutes for split-screen content.
- ※Only one layer supports video content in split-screen content.

#### 3 Multi-Display

Multiple ST-700s enable multi-screen digital signage. Up to 9 ST-700s synchronize each other to playback your content among multiple displays.

#### 4 Codec

The ST-700 supports H.264 and H.265 (HEVC) codec.

#### 5 HTML5 Contents Support

The ST-700 plays back HTML5 contents by its integrated web browser.

#### 6 HDMI Passthrough

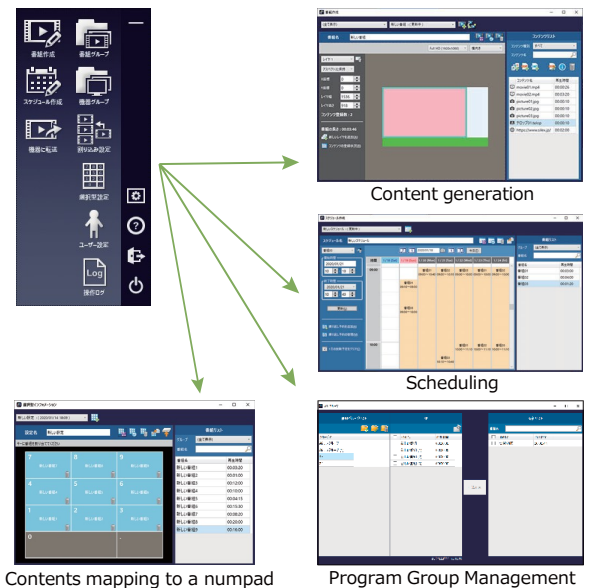
The ST-700 can display a content from another HDMI source. Even scheduling of the content from the other source is supported.

#### 7 Contents Management Software

Free SX Sign Control Software manages the contents and deploys them to the ST-700s installed in the network.

#### SX Sign Control Software Features

- Program creation and its group management
- ST-700 device grouping and its management
- Program distribution to ST-700 in the network
- Content layout (split screen, multi-display etc.)
- Scheduling
- Scrolling text creation
- Content playback interruption setting
- Contents mapping to a numpad to select a content through it
- Preview



## ST-700 Specifications

Product Name	ST-700
Wired LAN Interface	LAN port x 1 : 100BASE-TX/1000BASE-T (Auto) LAN/PoE port x 1 : 802.3at, 100BASE-TX/1000BASE-T (Auto)
Wireless LAN Interface	IEEE 802.11a/b/g/n/ac 1T x 1R ■ 2.4GHz/5GHz(Exclusive)
Device Interface	USB 2.0: x2 USB 3.0: x1 ※1
Switch	Push Switch x 2
LED	Body: x5 RJ-45: x2 / pot
Operating Environment	Temperature: -10 to +40°C Humidity: 20 ~ 90% RH
Storage Condition	Temperature: -10 to +50°C Humidity: 20 ~ 90% RH
Power Supply	802.3at compliant PoE AC adapter 100-240V 50/60Hz 12V DC output
Max Power Consumption	13.2W (DC12V 3.0A)
Dimension	200mm X 145mm X 35mm (the main body size excluding protrusions)
Weight	450g
Included Items	ST-700, AC adapter ※2, AC code, 4 x rubber feet, setup guide, GPL inquiry sheet
Regulatory Compliance	FCC Class B, CE Class B, VCCI Class A, RoHS
Video Interface	HDMI input, HDMI output
Video Codec	H.264, H.265/HEVC
Audio Interface	HDMI output, φ 3.5mm stereo mini (output)
Audio Sampling Rate	32kHz/44.1kHz/48kHz/96kHz
Security	Hidden SSID, MAC address filtering, contents encryption
Local Playback Contents Update Interface	Network, USB memory
Local Playback Supported Format ※3	Image: BMP, PNG, JPEG Video: MP4, WEBM, OGV Audio: AAC WEB: HTML5
Number of Layer for Split Screen Content	8
Text Scrolling	Font, Font color, Font background color, scrolling speed (3 levels)
Warranty	5 years

※1 : USB3.0 port is for future enhancement

※2 : AC adapter's operating temperature is 0 ~ +40°C

※3 : Scheduled content playback requires the ST-700 to connect with NTP server or a computer running SX Sign Control Software to retrieve local time.

Display resolution	Aspect ratio	Max. Frame rate
480p (720 x 480)	4:3	60Hz
720p (1280 x 720)	16:9	60Hz
1080p[FULL HD] (1920 x 1080)	16:9	60Hz
2160p[4K] (3840 x 2160)	16:9	30Hz

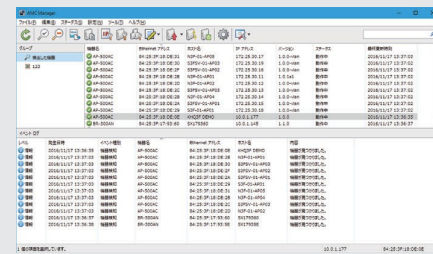
※ Some combinations of the display resolution and the video resolution cause a lower frame rate or black screen when the ST-700 plays back on display in portrait orientation.

## Related products

### Silex Product Administrative Software AMC Manager®

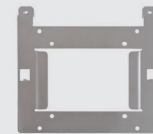


AMC Manager® is an administrative software to manage silex's products in your network. ST-700 is compatible with AMC Manager®. An administrator can access silex's products installed in your network to change device settings, update firmware, reboot devices, and monitor devices' status remotely with AMC Manager®. It saves operating resources to manage the devices, finds issues early, and troubleshoot the problems.



### Wall mount/VESA mounting bracket Bracket Type V

Optional bracket to mount ST-700 on a wall or a display with VESA mounting holes.



Silex technology is a registered trademark of silex technology, Inc. other product or brand names may be registered trademarks or trademarks of their respective owners. Technical information and specifications are subject to change without notice. © 2021 silex technology, Inc. All rights reserved.

## silex global sales & support locations



**US Office**  
silex technology america, Inc.  
US toll free 657-218-5199  
[www.silextechnology.com](http://www.silextechnology.com)  
[sales@silexamerica.com](mailto:sales@silexamerica.com)

**Europe Office**  
silex technology europe, GmbH  
+49-2154-88967-0  
Germany toll free 0800-7453938  
[www.silextechnology.com](http://www.silextechnology.com)  
[sales@silexeurope.com](mailto:sales@silexeurope.com)

**India Office**  
technology india, Pvt. Ltd.  
+91-44-43033234  
[www.silex-india.com](http://www.silex-india.com)  
[support@silex-india.com](mailto:support@silex-india.com)

**Corporate Headquarters silex technology, Inc.**  
+81-774-98-3781  
[www.silex.jp](http://www.silex.jp)  
[support@silex.jp](mailto:support@silex.jp)