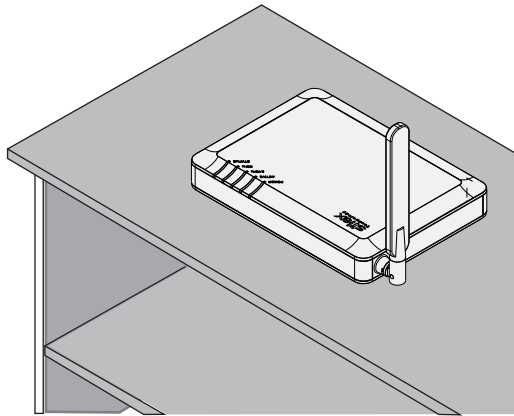


This document describes on proper antenna direction as well as the location of installation.
Adjust direction of the antenna according to how you have installed the unit.

1. Location of Installation

When placing the unit on a table

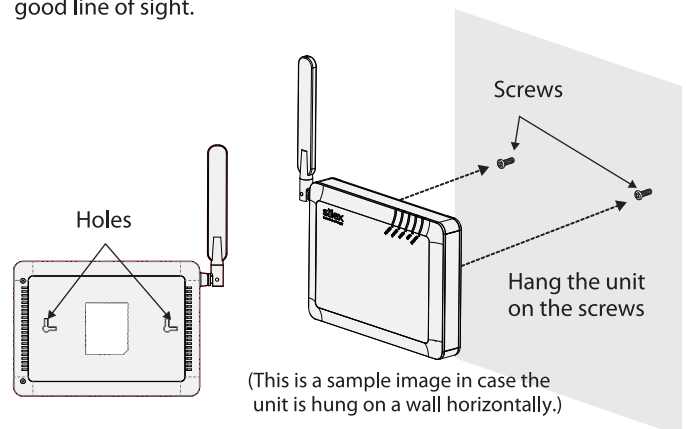
Place the unit on a table with good line of sight.



Do not place the unit on tilted or unstable surfaces.

When hanging the unit on a wall

Hang the unit on higher position of the wall to make sure of a good line of sight.

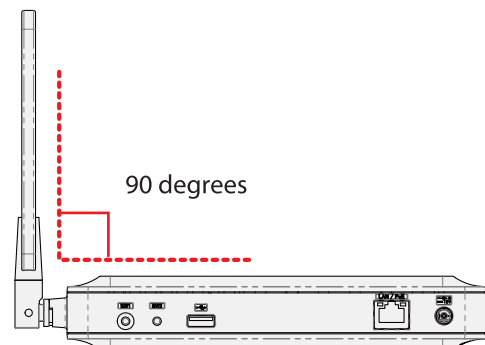
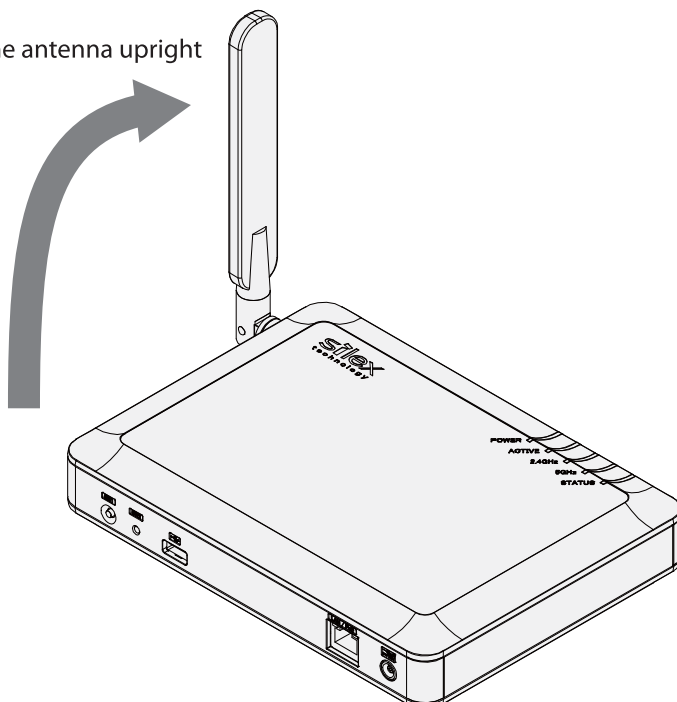


- * The screws do not come with the unit. They need to be purchased separately.
- * The unit may drop if it is not firmly hung on a wall. After hanging the unit on the screws, slightly move the unit horizontally and vertically to make sure it is fastened.

2. Change the Antenna Direction

When placing the unit on its bottom

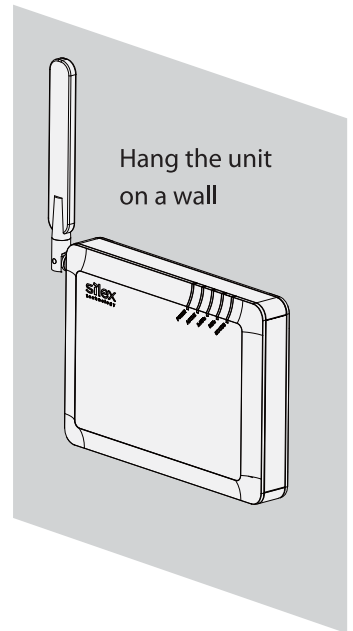
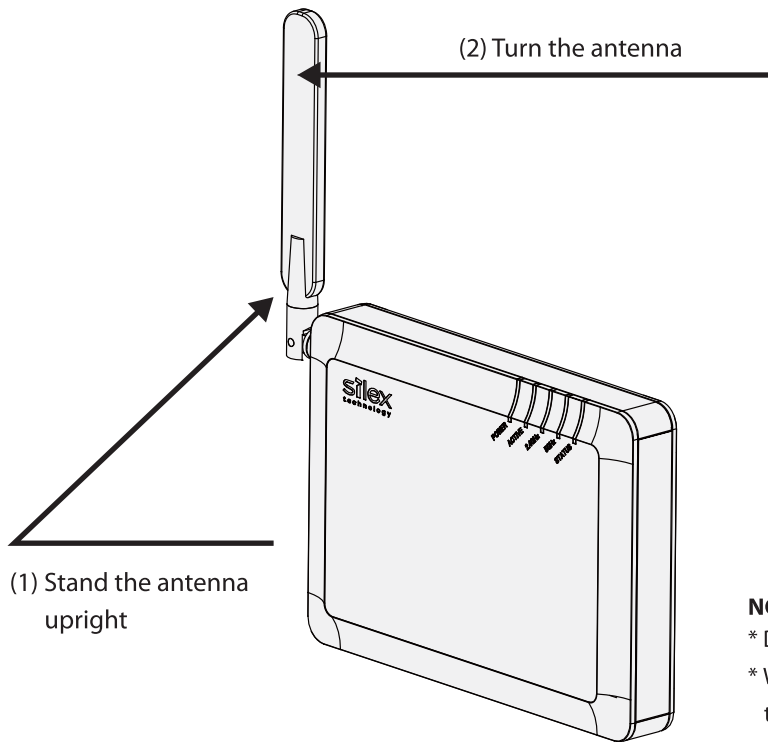
Stand the antenna upright



NOTE

- * Do not push the antenna to a wrong direction.
- * When you turn the antenna, please be sensitive to the limit of its stopper.

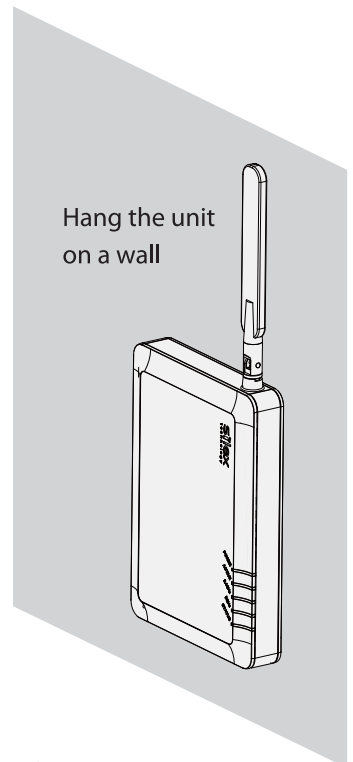
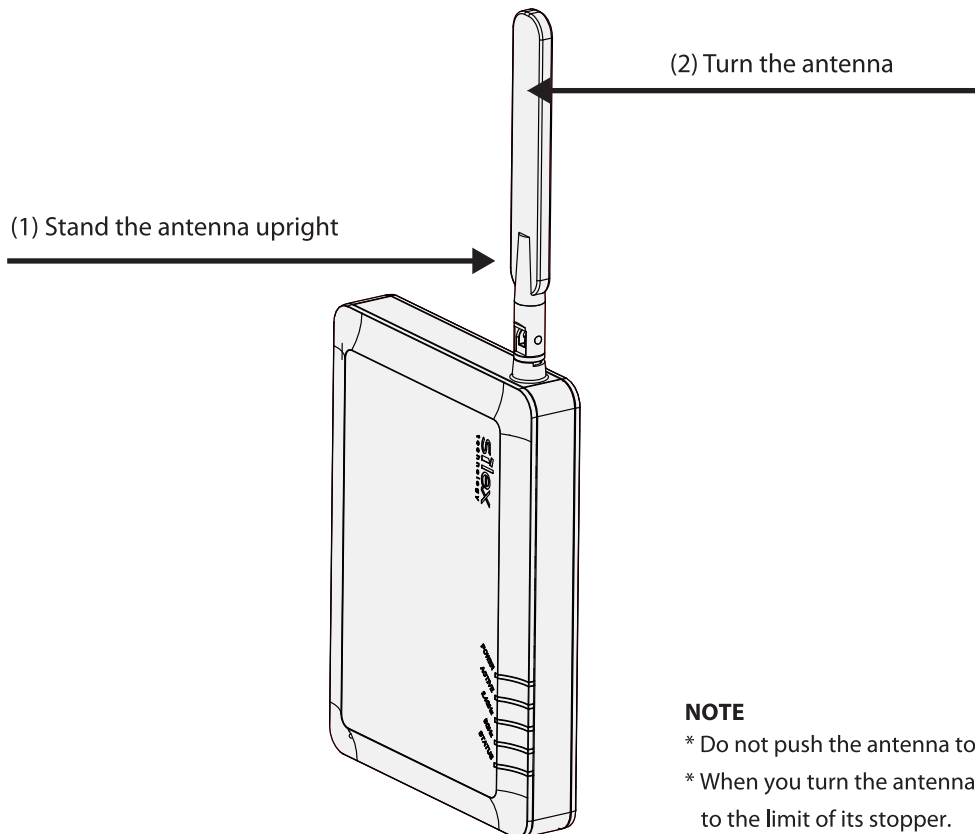
When hanging the unit horizontally on a wall



NOTE

- * Do not push the antenna to a wrong direction.
- * When you turn the antenna, please be sensitive to the limit of its stopper.

When hanging the unit vertically on a wall



NOTE

- * Do not push the antenna to a wrong direction.
- * When you turn the antenna, please be sensitive to the limit of its stopper.