

DS-520AN

802.11n Wireless & Gigabit Ethernet USB Device Server Including 802.1X Enterprise Security



Easily & Securely Connect and Share Virtually any USB Device on Enterprise Networks

Office equipment such as USB scanners, multi-function printers (MFPs), dongles, hard disk drives, and cameras etc. frequently lack a wireless interface thus making them unavailable to connected devices such as computers, tablets, and smartphones. The DS-520AN Wireless USB Device Server replaces the USB cable with an enterprise-secure wireless or wired LAN connection.

By using the DS-520AN, users can overcome the restriction in the maximum length (5m) of USB cables because the USB device can be accessed from any location remotely over the network. This provides increased flexibility and ease of use.

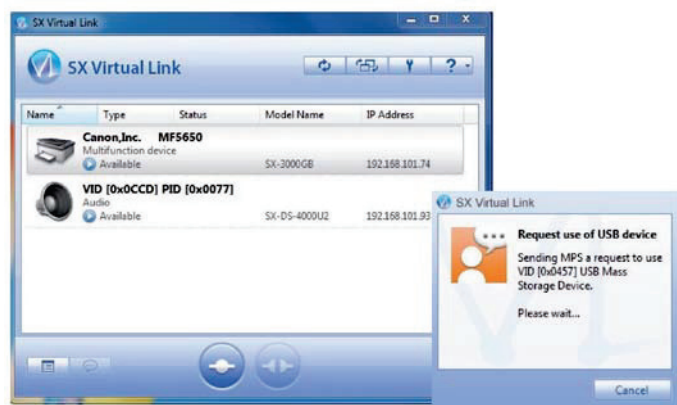
IT infrastructure procurement costs can be reduced by sharing USB devices such as office printers across multiple users in a networked environment using a DS-520AN. Multiple users can access the same USB device sequentially which is managed by Silex SX Virtual Link Software.

What is a USB Device Server?

A USB Device Server such as the DS-520AN is a network adapter that uses Silex USB Virtual Link Technology® to make USB devices "network-compatible". Virtually any USB device that users can think of can thus be used over a network in exactly the same way as if it were physically connected via a USB cable. Existing drivers and applications can continue to be used without requiring any changes.

SX Virtual Link

SX Virtual Link (SVL) is application software for the Silex USB Virtual Link (UVL) Technology®. Any networked USB devices connected to a USB Device Server can be remotely managed through SVL.



- You can remotely operate USB devices (connect, disconnect, etc.)
- You can send a disconnect request when the shared USB device is in use.

Functions

1 Enterprise Security

Security for professional use that takes IT security beyond standard encryption and which can be relied on by business users:

- Encryption: AES
- IEEE 802.1X:
 - EAP-TLS
 - EAP-TTLS
 - PEAP
 - EAP-FAST
 - LEAP

2 Isochronous data-transfer mode

Devices such as industrial USB cameras (full- and high-speed) and audio devices such as loudspeakers that require continuous and almost real-time data transfer can also be used in a wireless network environment.*

*The use of isochronous USB devices is very complex and not every device can be used in the wireless network. Compatibility validation is strongly recommended.

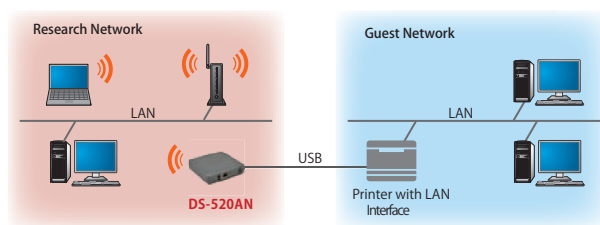
3 Wireless print server

The DS-520AN can be used as a wireless print server. The "RAW" and "LPR" network print protocols are supported.

Furthermore, printers with fitted LAN cards can have an extra WLAN interface added. This allows the printer to be used by several people, even from different network segments.

Example:

Printer can be used from separate network segments (e.g. research / open guest network) thanks to additional interface.



This example shows the use of the DS-520AN as a wireless resource. The DS-520AN can also be used as a second LAN interface (wired). It is not possible to simultaneously use it as a WLAN and LAN print server.

