

# Projection Assistant Software SX Virtual Link Display for Education User's Guide for Students

**silex**  
technology

Jul 2017  
WA104560XX

SX Virtual Link Display for Education is the projection assistant software program that is exclusively designed for educational sites and can be used in a class room of school with Silex Technology's Access Points. This document explains how to install it to a tablet device of student and join the class. The procedures will differ depending on types of operating system. See the explanation appropriate for your operating system.

\* In this document, touch-panel device is used as example. If you are using a mouse or touch pad, please "click" instead of "tap" to follow the instructions.

## Supported OS

### Windows

Windows7 SP1 (32bit/64bit)  
Windows8 (32bit/64bit)  
Windows8.1 (32bit/64bit)  
Windows10 (32bit/64bit)

\* Fast User Switching Function is not supported.  
\* Runs as a desktop application program on Windows 8 or newer operating systems.  
\* Windows RT is not supported.

### Chrome OS

Chrome OS Version 44 or newer

\* In this document, following operating systems are used as example.  
- Windows7 SP1  
- Chrome OS Version 52

## NOTE

### Notes on use on Chrome OS

If the default gateway address is blank on network configuration of the tablet device, SX Virtual Link Display for Education fails to establish communication. To obtain the network setting automatically from DHCP server, set the DHCP server to distribute the default gateway address. To configure the network setting manually, please set the default gateway address to the tablet device.

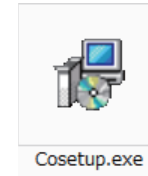
## Windows

## Installing SX Virtual Link Display for Education (for Students) to a tablet device of student

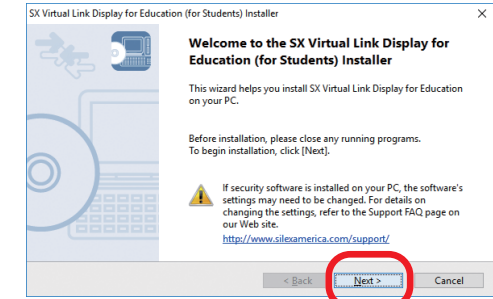
- 1 Visit Silex Technology's website and download the Windows version of **SX Virtual Link Display for Education (for Students)**.

URL : <http://www.silexamerica.com/>

- 2 Extract the downloaded file and execute **Cosetup.exe** in the "s-xxxxx" folder.



- 3 Installation wizard is displayed. Tap **Next** and follow the instructions on a screen.



## Joining a class using SX Virtual Link Display for Education (for Students)



The main screen of SX Virtual Link Display for Education (for Students) is displayed. Tap the name entry field and enter the name of student who joins the class (1). Select a teacher of the class to join (2) and tap (3).

After the student has joined the class, the screen of SX Virtual Link Display for Education (for Students) is hidden until the class is finished.

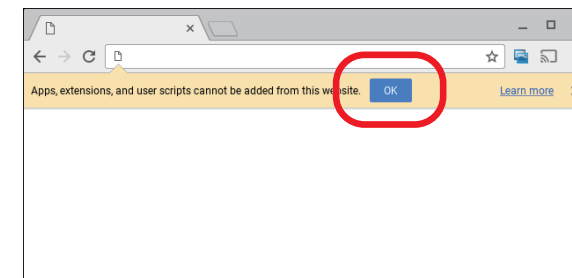
## Chrome OS

## Installing SX Virtual Link Display for Education to tablet (for students)

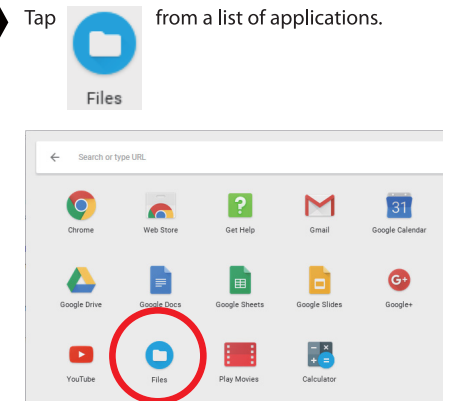
- 1 Visit Silex Technology's website and download the Chrome OS version of **SX Virtual Link Display for Education (for students)**.

URL : <http://www.silexamerica.com/>

- 2 The message "Apps, extensions, and user scripts cannot be added from this website" is displayed. Tap **OK**.

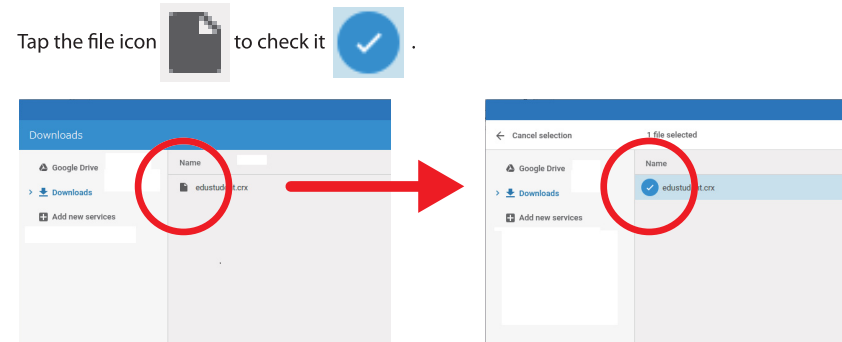


- 3 Tap **Files** from a list of applications.

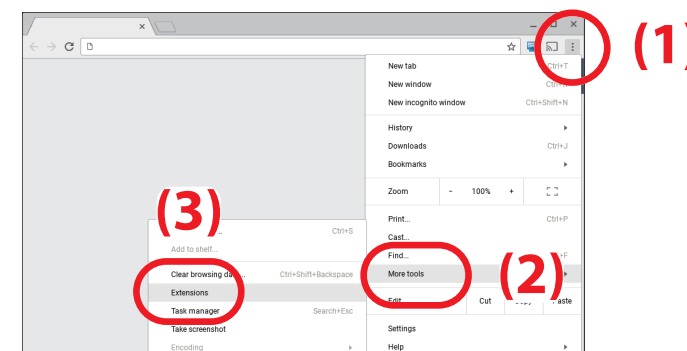


- 4 The downloaded file is displayed.

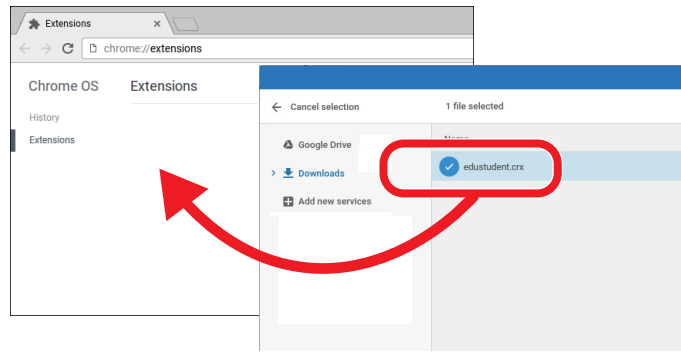
Tap the file icon to check it.



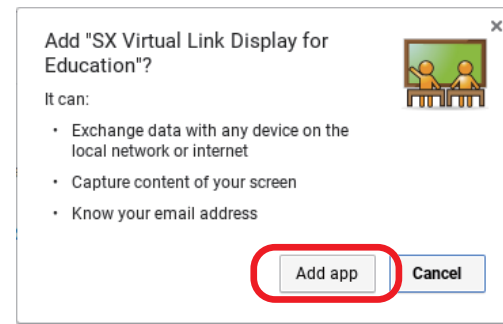
- 5 Tap **More tools** of Google Chrome (1), select **More tools** (2) - **Extensions** (3) from the menu.




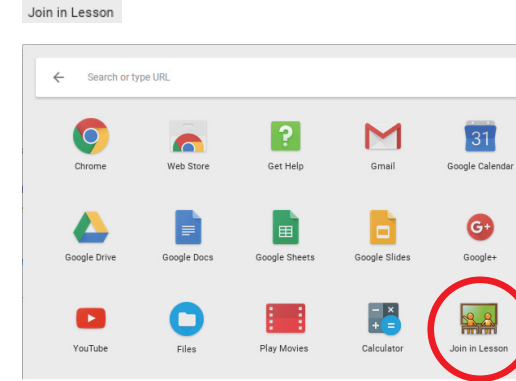
6 The extension setting page is displayed.  
Drag & Drop the downloaded file onto the extension setting page.




7 A confirmation message is displayed.  
Tap **Add app**.

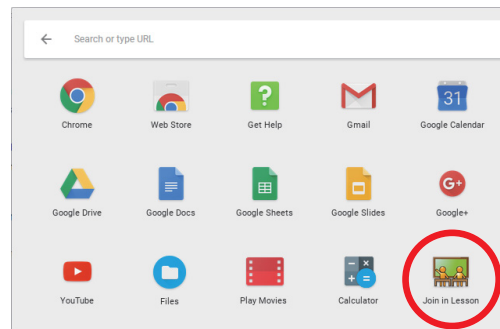


8  has been added to a list of applications.

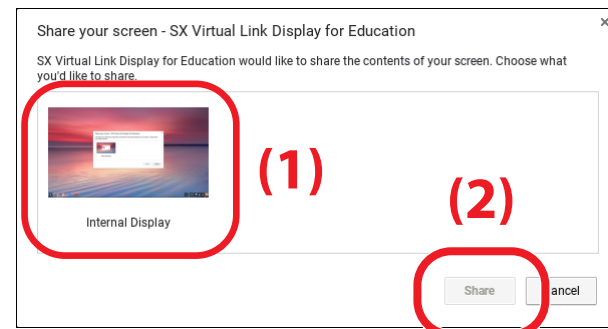


## Joining a class using SX Virtual Link Display for Education (for students)

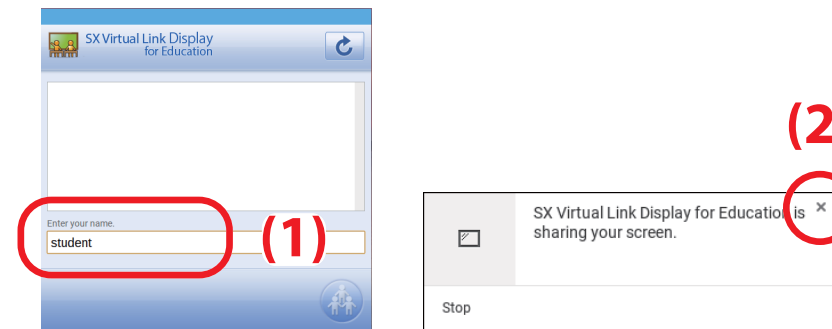
1 Tap  from a list of applications.




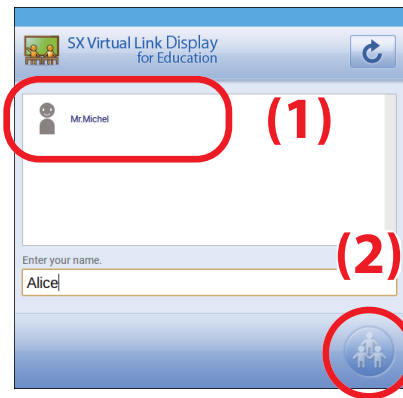
2 A confirmation message is displayed.  
Select **Internal Display** (1) and tap **Share** (2).



3 The main screen appears and the message "**SX Virtual Link Display for Education is sharing your screen**" is displayed.  
Tap the name entry field on the main screen and enter the name of student who joins the class (1).  
Tap X button on top right of the message to close the message (2).



4 Select the teacher to join the class of (1) and tap  (2).



After the student has joined the class, the screen of SX Virtual Link Display for Education (for students) is hidden until the class is finished.