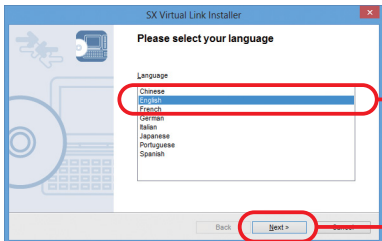


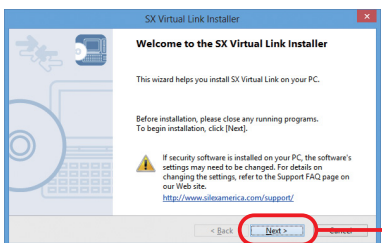
SX Virtual Link Installation (Windows)

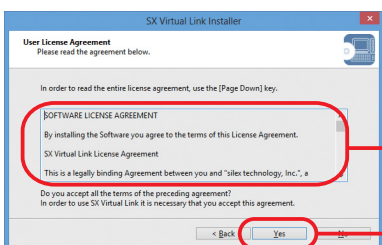
This document explains how to install SX Virtual Link to a Windows PC. Follow the instructions below to install SX Virtual Link.

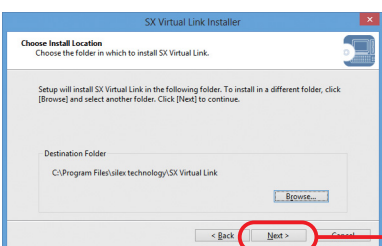
- 1 Double-click **Cosetup.exe** contained in the **SX Virtual Link** you have downloaded.

*If the **User Account Control** message is displayed, click **Yes** or **Continue**.

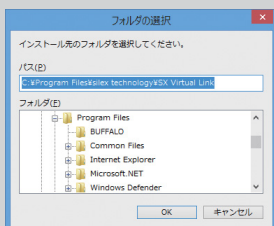
- 2  **Click English.**
Click Next.

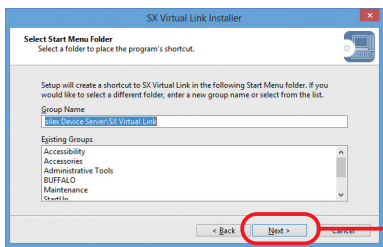
- 3  **Click Next.**

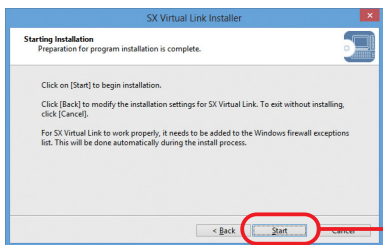
- 4  **Read the agreement.**
Click Yes.

- 5  **Click Next.**

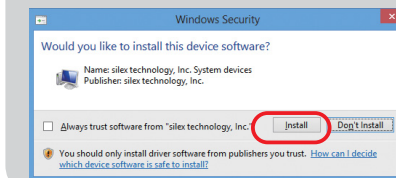
By clicking the **Browse** button, you can choose the folder to install SX Virtual Link into.

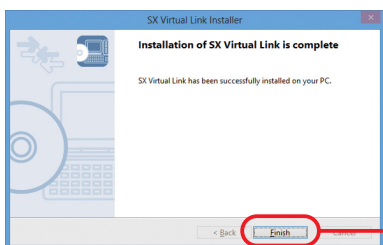


- 6  **Click Next.**

- 7  **Click Start.**

When Windows Security screen is displayed, click **Install**.



- 8  **Click Finish.**

*Restart your PC if it is required by the system.

Customer Support

USA : silex technology america, Inc.

E-mail : support@silexamerica.com

URL : <http://www.silexamerica.com/>

Phone : 1-866-765-8761

Europe : silex technology europe GmbH

E-mail : support@silexeurope.com

URL : <http://www.silexeurope.com/>

Phone : +49-(0)2151-65009-0